

640519 PLAINE DE JARRES

TARGET: GUERRILLA POSITIONS, MEKONG DELTA, SVN  
DEFENSES: AAA, SMALL ARMS  
BEST BAILOUT: OUT OF COMBAT AREA

SQUADRON ASSIGNMENT: 15th TRS TAN SON NHUT AB, RVN  
AIRCRAFT AND NUMBER (1) RF-101C

CALL SIGN: DAGGER

HEADING/DISTANCE TO TGT: 345 / 330 NM  
ETD: 0900 TIME OVER TARGET: 1000  
WEATHER BRIEF: SCT 9000 FT WINDS 3606G10 VIS 20 NM



## HISTORY

A right-wing coup overthrew the government of Laos in 1964. This provided the Communist Pathet Lao back into combat in the Plaine de Jarres of Northern Laos. The US responded by backing the government against them. The US needed to know the full extent of Soviet support and sent reconnaissance aircraft to the area. The flight was long and the target areas were poorly demarcated but the pilots were trained in finding objects on the ground. One of the first losses was an RF-101C from Tan Son Nhut Airbase at Saigon.



## GAMEPLAY

You are Dagger Lead departing Saigon. Follow the navigation set in and rendezvous with Zebra tanker on the way to the area to be scouted.

Descend to 8000 ft for your first target at WP4, the Ben Ken Bridge, then on to Sam Neua at WP5 and finally to Ban Ban at WP6, before the long haul back to Saigon.

Look for signs of activity in the jungle. If the game alerts you to nearby enemies, that's the area. Go look.



It's long and...it's dangerous.

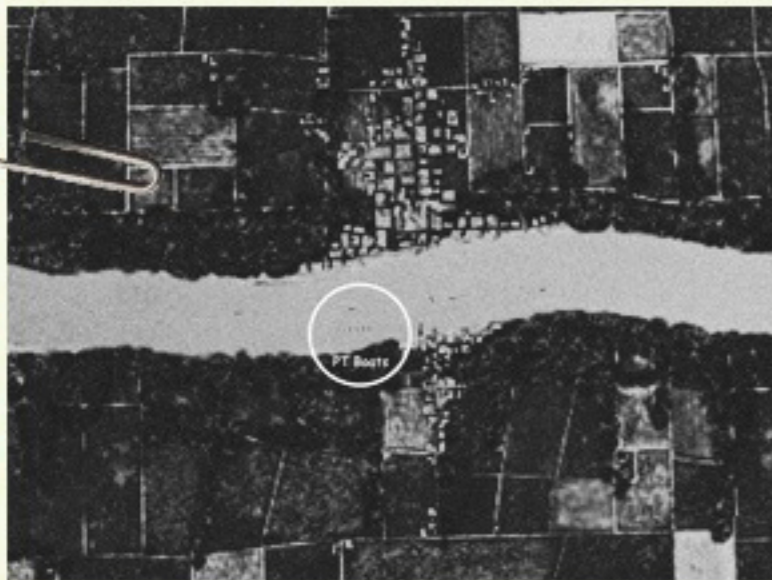


**TOP SECRET**

640805 QUANG KHE FERRY

TARGET: PT BOATS, BASE, PETROL STORAGE, QUANG KHE FERRY, NVH

TARGET PHOTO: 640803 RP-8C 5000 FT



DEFENSES: AAA UNKNOWN  
BEST BAILOUT: EAST TO GULF

SQUADRON ASSIGNMENT: VA-55 USS TICONDEROGA/ YANKEE STATION  
AIRCRAFT AND NUMBER (4) A-4C  
ORD LOADOUT: (2) LAU-61, (700 RDS) 20MM  
CALL SIGN: MEMPHIS

HEADING/DISTANCE TO TGT: 227/32 NM  
ETD: 0610  
TANKER RENDEZVOUS: NA  
TIME OVER TARGET: 0630

CONTROLLING AGENCY: RED CROWN  
WEATHER BRIEF: BKN 6000 FT WINDS 36002G02 VIS 30 NM



## HISTORY

In "retaliation" for an attack on US destroyers in the Gulf of Tonkin, Johnson ordered a raid on all PT Boats and fuel supplies in an operation called Pierce Arrow. Crews hit Hong Gai near the Chinese border and that is where Alvarez was shot down. They hit the fuel depot at Vinh, the PT boats at Loc Chau and Ben Thuy near Vinh. The closest target to Yankee Station was Quang Khe. So it was hit first.



## GAMEPLAY

Carrier launch at dawn. Climb on course and follow Lead. Watch for coastline on your radar. Boats should give off a nice radar return. Your target is the PT Boats moored across the river from the docks. They have guns. Take your time with your rockets. Don't get too low or they will get you. One pass, haul ass. They are serving steak on the carrier. Be sure you get home for it.

Carrier landing. Now don't you wish you had practiced?

You are a rookie, not a combat veteran. You have never killed anyone or had anyone try to kill you. Plus you and your Scooter live on a boat where you have to land. And for all that, it's just a one star mission.



**SECRET/NOFORN**

[MISSION NAME] 640805 HONG GAI RAID

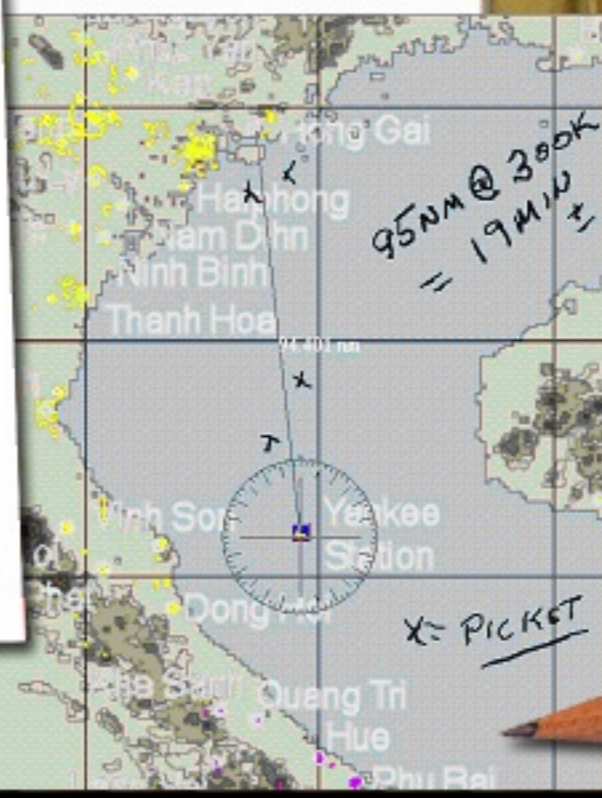
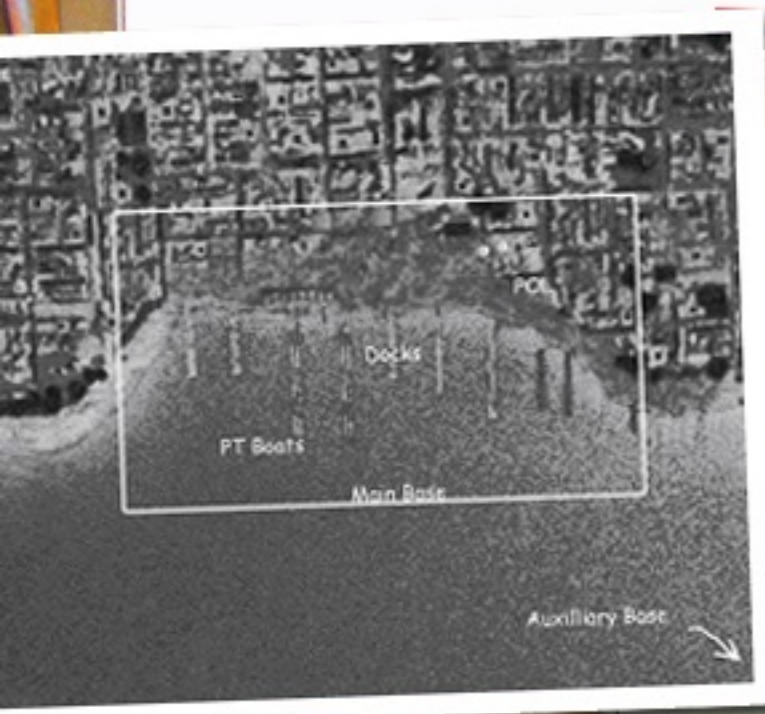
TARGET: PATROL BOAT MOORAGE AND DOCKS, HONG GAI, NVN  
DEFENSES: 23MM, 57MM, 85MM  
BEST BAILOUT: SOUTH FEET WET

SQUADRON ASSIGNMENT: VA-144, USS CONSTELLATION YANKEE STATION  
AIRCRAFT AND NUMBER (4) A-4C  
ORD LOADOUT: (1) LAU-61B, 600 RND 20MM  
CALL SIGN: KINGFISH

HEADING/DISTANCE TO TGT: 355/95 NM  
ETD: 0730  
TANKER RENDEZVOUS: NA  
TIME OVER TARGET: 0800

CONTROLLING AGENCY: RED CROWN

WEATHER BRIEF: BKN 4500 FT WINDS 3603G05 CU VIS 30 NM  
TARGET PHOTO: 640729 RF-8G 4000 FT



## HISTORY

Every pilot that flew in combat in Vietnam knew the name Everett Alvarez. He was shot down and captured on the Hong Gai Raid, as part of Op Pierce Arrow on the first air strikes of the war. He was held prisoner from this day until the end of the war. He said that on the long flight he was shocked to realize he was actually going into battle. He survived to be the man who dedicated the Vietnam Veterans Memorial in Washington DC in 1984.

They were briefed to avoid hitting Chinese territory which was adjacent to the base. When they arrived, the PT Boats were not in port but scattered around the Bay. Their searching for targets alerted gunners and the element of surprise evaporated. Nonetheless, they destroyed the boats and the petroleum supplies before returning to the ship.

Remember: Fighter pilots make movies; attack pilots make history. This is the first day of the longest war in American history.



## GAMEPLAY

After launch and join up your flight will come starboard to a heading of 355 and climb above the clouds. At 300 knots it will take about 19 minutes to arrive over target. Use your radar to find the bay and the PT Boats. When you get there, the PT Boats aren't where you were told they would be. They are at the Alternate base to the ESE.

How do you get home?...the reciprocal heading is 175/95. The Constellation will show on your radar as will the picket ships. Keep it moving and you should survive if you have practiced your carrier landings.

This is a relatively simple mission if you can navigate and bomb from altitude. If you get low, you will not get home for dinner for the next 9 years.



[MISSION NAME] 640805 PIERCE ARROW

TARGET: BEN THUY/LOC CHAU PT BASES

DEFENSES: HEAVY AAA DEFENSE,  
BEST BAILOUT: FEET WET TO EAST

SQUADRON ASSIGNMENT: VA-145  
AIRCRAFT AND NUMBER (4) A-1H SKYRAIDERS  
CALL SIGN: LION

HEADING/DISTANCE BEN THUY: 275/ 49 NM  
ETD: 0730  
TIME OVER TARGET: 0800

CONTROLLING AGENCY: RED CROWN  
WEATHER BRIEF: BKN 6000 FT WINDS 2702 VIS 30 NM

TARGET PHOTO: RF-8G 640726 0730 5000  
TARGET PHOTO: USS PERCH (SS-313)

**CONFIDENTIAL**



## HISTORY

You have flown both Quang Khe Ferry and Hong Gai Raid. These are the remaining targets hit on the first day of the war in Operation Pierce Arrow in retaliation for an attack on the destroyers Maddox and Turner Joy in the Tonkin Gulf. This is a full-on Alpha Strike and there is plenty to see.

While the A-4 Skyhawk was the Navy's new attack aircraft, the AD or A-1H Skyraider was its old one. Reliable and slow, it could carry a large bomb load over a long distance, take brutal punishment and get home to fight again.



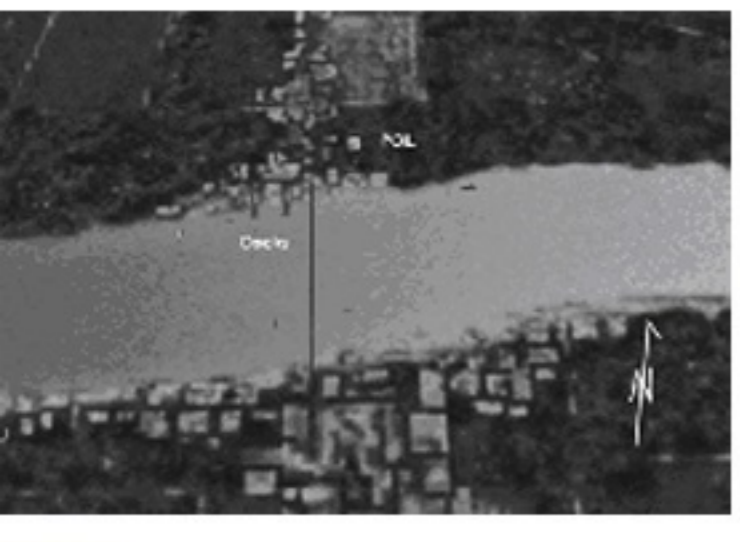
## GAMEPLAY

You are Lion 4, the last flight over target at the Ben Thuy and Loc Chau PT bases and the Vinh Bridge. Upon the opening of the mission, you might pause the game to locate your flight.

Fall into position and proceed to the target and take it out. If it has been hit, pick something else. Keep your speed up and enjoy the fight.

You know it isn't fast but take it back to the carrier and land it. Imagine getting back aboard after your first combat mission, wishing for a jet but grateful for a Spad.

Simple but don't be careless in the target area.



TOP SECRET



[MISSION NAME] 640805 PIERCE ARROW BDA

**CONFIDENTIAL**

OBJECTIVE: PHOTO REC BEN THUY/LOC CHAU PT BASES

TARGET PHOTO: RF-8G 640726 0730 5000

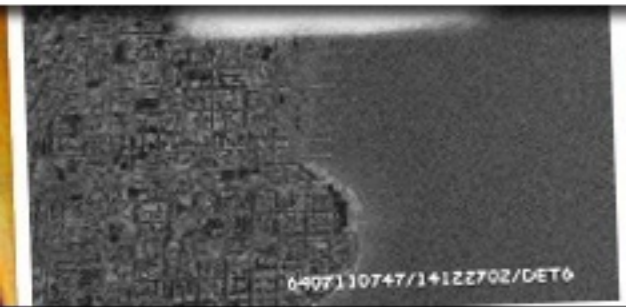
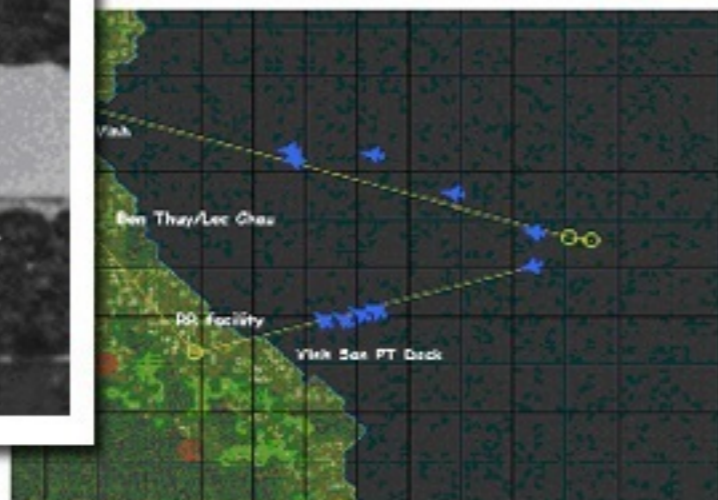
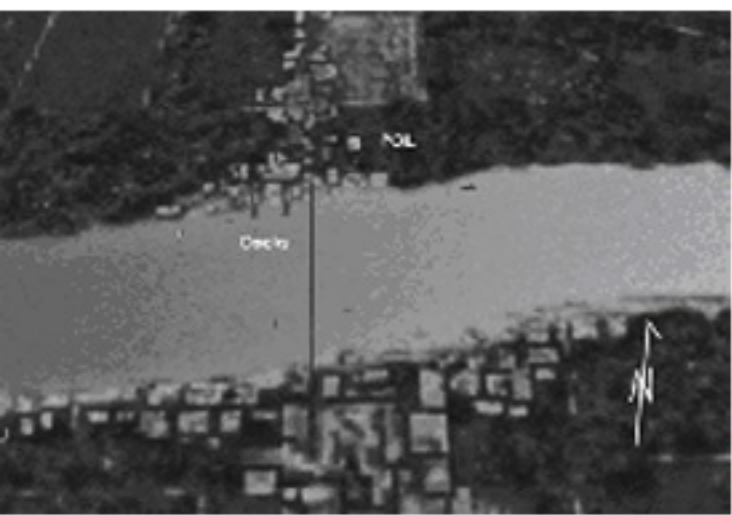
DEFENSES: HEAVY AAA DEFENSE,  
BEST BAILOUT: FEET WET TO EAST

SQUADRON ASSIGNMENT: VFP-63 DET G  
AIRCRAFT AND NUMBER (1) RF-8G  
CALL SIGN: VIPER

HEADING/DISTANCE BEN THUY: 275/ 49 NM  
ETD: 0730  
TIME OVER TARGET: 0800

HEADING/DISTANCE TO VINH: 280/53 NM  
TIME OVER TARGET: 0815

CONTROLLING AGENCY: RED CROWN  
WEATHER BRIEF: BKN 6000 FT WINDS 2702 VIS 30 NM



## HISTORY

You have flown both Quang Khe Ferry and Hong Gai Raid. These are the remaining targets hit on the first day of the war in Operation Pierce Arrow in retaliation for an attack on the destroyers Maddox and Turner Joy in the Tonkin Gulf. This is a full-on Alpha Strike and there is plenty to see



## GAMEPLAY

Recon pilots were not just flying photographers hitting spots on the maps. They were trained in visual aerial reconnaissance. Every flight always involved "taking a look" at something for Intel. Your mission is to look at the Vinh Son PT Base as well as a rail-road facility prior to post strike photos.

You're flying tail end to an Alpha Strike and there are two main targets you need to capture on film. The first is a bridge at Ben Thuy which is marked as your initial point. When you get there that bridge should be down. Get the shots, then head for your objective point, which is the Vinh Son PT base. Hopefully you can get some dramatic shots of the damage we expect to have inflicted, before high-tailing it back to the carrier with your precious film. Who knows, when this is all over, you may get a job photographing Audrey Hepburn in Hollywood.

Remember, they know you are coming. That's the part recon pilots hated and loved about their job.

This mission is relatively easy to fly but hard to complete. To enjoy it, you must try to do what the pilot did that day. You must look, think and take photos (both vertical and side-looking) to be analyzed later. You have to put yourself at risk to gather vital information. Speed and skill is your defense. It has surprises. And more than any other mission, a successful landing is mandatory.



[MISSION NAME] 641014 POST STRIKE

**TOP SECRET**

TARGET: BDA BAN PHANOP, LAOS



DEFENSES: UNKNOWN  
BEST BAILOUT: WEST OF PASS, AWAY FROM TRAILS

CALL SIGN: COWBOY  
TANKER RENDEZVOUS: POST STRIKE CALL SIGN: ZEBRA  
CONTROLLING AGENCY: RED CROWN  
WEATHER BRIEF: SCT WINDS 27001G03 VIS 30 NM



## HISTORY

The first attack on the Communist supply lines into South Vietnam has just occurred. The resistance was insignificant but from that point on became increasingly lethal. And no prisoners were taken in Laos either.

After every strike, someone went to look. It was known a recon plane would be coming and the reception was always hot.



## GAMEPLAY

Take off and head for the Mu Gia Pass flying North in an RF-101C of the 45th TRS from Tan Son Nhut airbase in Saigon.

At WP4 punch off your tanks, and turn to the target area.

Enter the pass from the North Vietnam side and fly down the trail to Ban Phanop and photograph the results of the strike.

Use the VertScope and fly straight and level to WP5. The straight down shots are what they want. Zebra tanker is in the area if your fuel is running down.

Upon landing, taxi to the man by the jeep and open your film bay. Well done.



A lot to do right, not much time to do it and no second chances.



[MISSION NAME] 641230 TCHEPONE BARRACKS

**TOP SECRET**

TARGET: MILITARY BARRACKS VCNTY TCHEPONE BRIDGE

DEFENSES: SMALL ARMS, 51 CAL  
BEST BAILOUT: HIGH GROUND TO WEST

SQUADRON ASSIGNMENT: VA-145 CVA-64 YANKEE STATION  
AIRCRAFT AND NUMBER (4) A-1H SKYRAIDERS  
ORD LOADOUT: (12) MK82, (600 RND) 20MM

CALL SIGN: DAGGER  
HEADING/DISTANCE TO TGT: 240/46 NM  
ETD: 1500 TIME OVER TARGET: 1520  
CONTROLLING AGENCY: RED CROWN  
WEATHER BRIEF: BKN 12000 FT WINDS 3603G08 VIS 40 NM

TARGET PHOTO: RF-8G 641220



## GAMEPLAY

Launch as Dagger off the Constellation in the early days of the war. Join up and fly across Vietnam to neutral Laos. Once on target and under the clouds, destroy the barracks. If you have the ordnance remaining, attack the supply convoy that is arriving, both trucks and bicycles.

You will have surprise on your side at first. As time passes, more shooters will get their guns. Keep your energy up and do not let the gunners track for long.

Then return with your flight to the carrier and land it.



## HISTORY

The Joint Chiefs of Staff had a list of targets they wanted bombed right away. One of these was the North Vietnamese barracks in neutral Laos at a place named Tchepone. Everyone that flew in Vietnam has heard of the place where AAA was as deadly as that in Pack 6 and where the gunners were not just numerous but very accurate and very brave. This mission occurred before it was famous.

The bridge and airfield were already destroyed by the time of this attack.

Sometimes, Tchepone was the worst place to fight in the air.

Formation flight. Flight discipline in picking targets the others don't hit. Getting back aboard ship.

